



Kempton Grove, Cheltenham, GL51 0JU

Two Bedrooms | End Terrace Property | En Bloc Garage | Corner Plot

Double Glazing | Private Rear Garden | Great Value For Money | Close to GCHQ and M5 Junction

Asking Price: £180,000

Kempton Grove Cheltenham

Located within the every popular Fiddlers Green residential development is this superb TWO DOUBLE BEDROOM end of terraced freehold STARTER HOME with EN-BLOC GARAGE. This fine property occupies a CORNER PLOT and does require some cosmetic updating hence the very attractive asking price. Early viewings recommended to avoid disappointment.

SATALITE NAVIGATION ADDRESS - GL51 0JU

LIVING ROOM

4.70m (15' 5") x 3.02m (9' 11")



KITCHEN

4.01m (13' 2") x 2.54m (8' 4")



BEDROOM ONE

4.04m (13' 3") x 3.07m (10' 1")



BEDROOM TWO

3.48m (11' 5") x 2.57m (8' 5")

BATHROOM

3.99m (13' 1") x 1.40m (4' 7")



OPENING HOURS

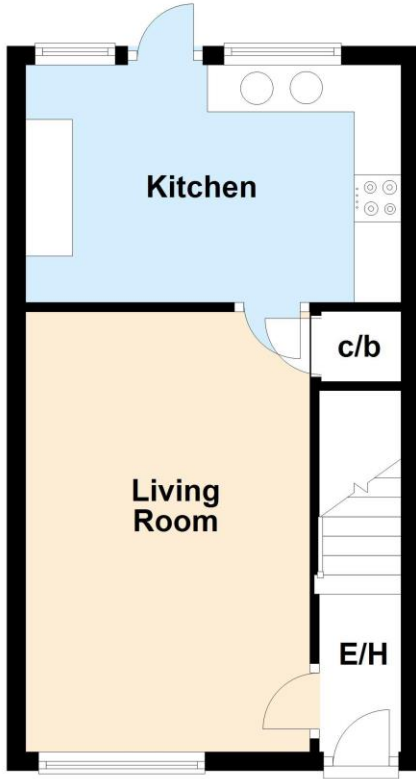
Monday - Friday: 9am - 6pm
Saturday: 9am - 5pm
Sunday - Closed

THINKING OF SELLING?

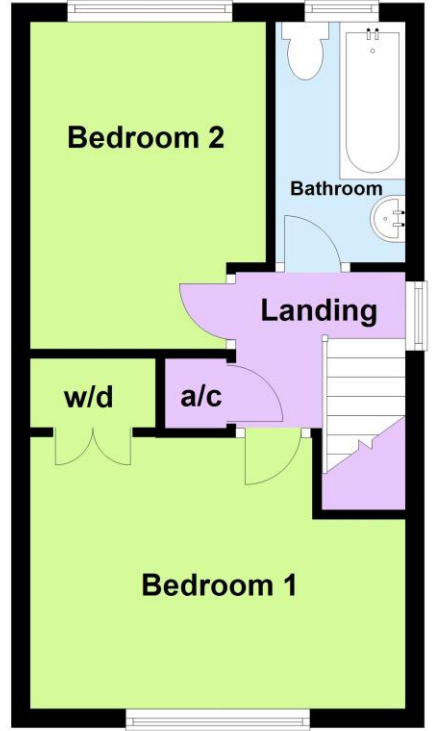
If you are thinking of selling your home, we are curious to discover the value of your property. Our experienced Estate Agents and Property Hunters would be pleased to provide you with a free valuation.

Kempton Grove, Cheltenham, GL51 0JU | £180,000

Ground Floor



First Floor



Energy Efficiency Rating		Current	Potential
Very energy efficient - lower running costs	(92-100) A		
(81-91) B			
(69-80) C			
(55-68) D			
(39-54) E			
(21-38) F		40	
(1-20) G			64
Not energy efficient - higher running costs			
England & Wales		EU Directive 2002/91/EC	

Environmental Impact (CO ₂) Rating		Current	Potential
Very environmentally friendly - lower CO ₂ emissions	(82-100) A		
(61-81) B			
(39-60) C			
(16-38) D			
(9-15) E			
(1-8) F		39	
(1-20) G			52
Not environmentally friendly - higher CO ₂ emissions			
England & Wales		EU Directive 2002/91/EC	

Energy Performance Certificate

The energy efficiency rating is a measure of the overall efficiency of home. The higher the rating the more energy efficient the home is and the lower the fuel bills will be.